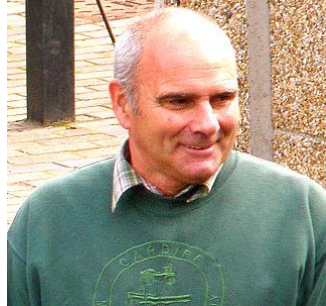




# CMES Newsletter

Mike's Points



Summer 2016

Well, another year is passing fast. We have had some of the Open Days where we have had very poor weather, so the attendance has been down. The new footbridge has been a great success and well received by our disabled visitors. We had our usual schools visit which was enjoyed by all. This year we did not have a visit from the Chernobyl children after so many years so hopefully things are improving with them. The Rally was a great success and although the number of visiting locos was down, a great time was had by all. So thanks once again to all who helped prepare the site and looked after our visitors. As always our Ladies did a great job with the catering and our first venture with a 'Hog Roast' was generally well received and took a load off the Ladies. We also hosted a Charity day for the Footprints Foundation





# CMES

# Newsletter

## Welsh Locomotive Rally 2016





# CMES

# Newsletter

## Welsh Locomotive Rally 2016



Watching the trains go by!

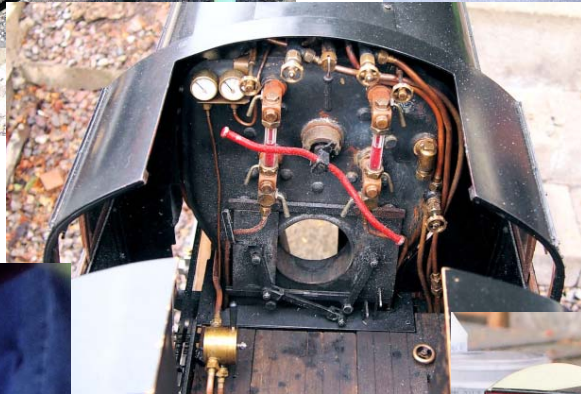




# CMES

# Newsletter

## Welsh Locomotive Rally 2016





# CMES

# Newsletter

## Welsh Locomotive Rally 2016





# CMES Newsletter

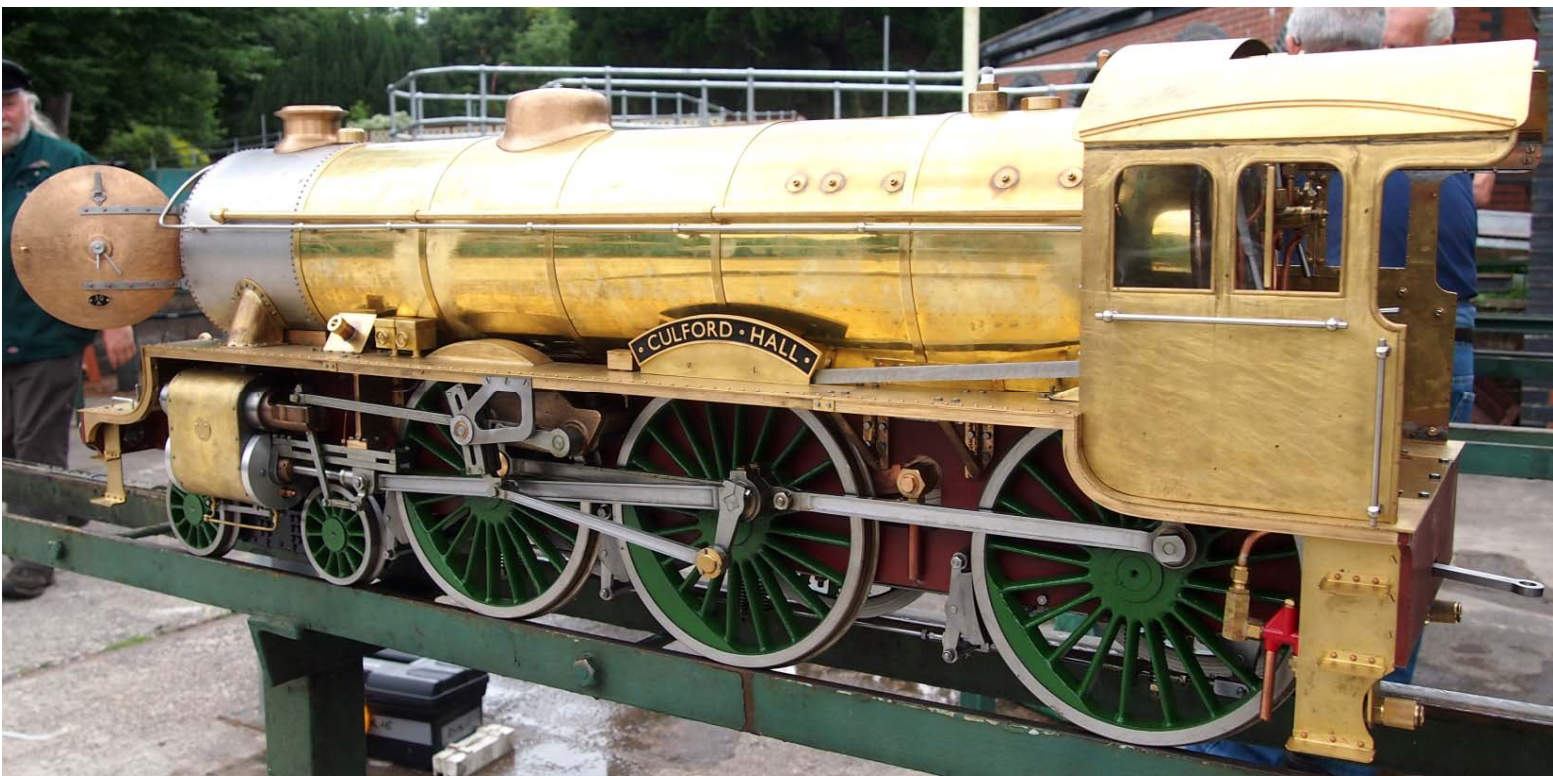
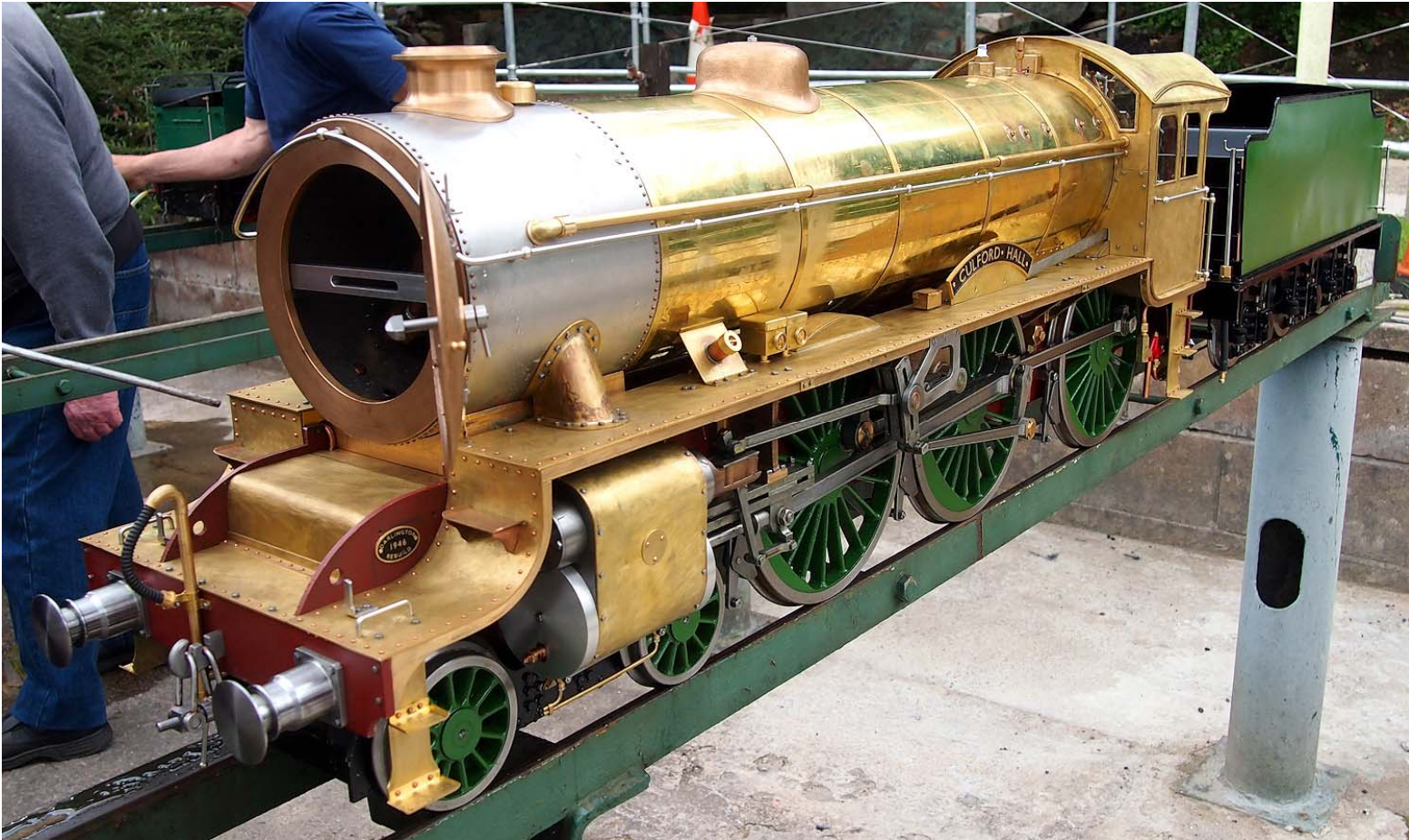
**Rally meal  
for once the Ladies had  
a rest and outside  
caterers provided  
'a Hog Roast'**





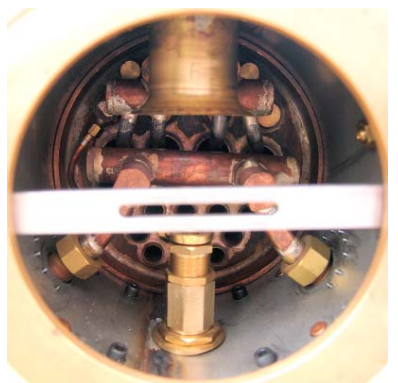
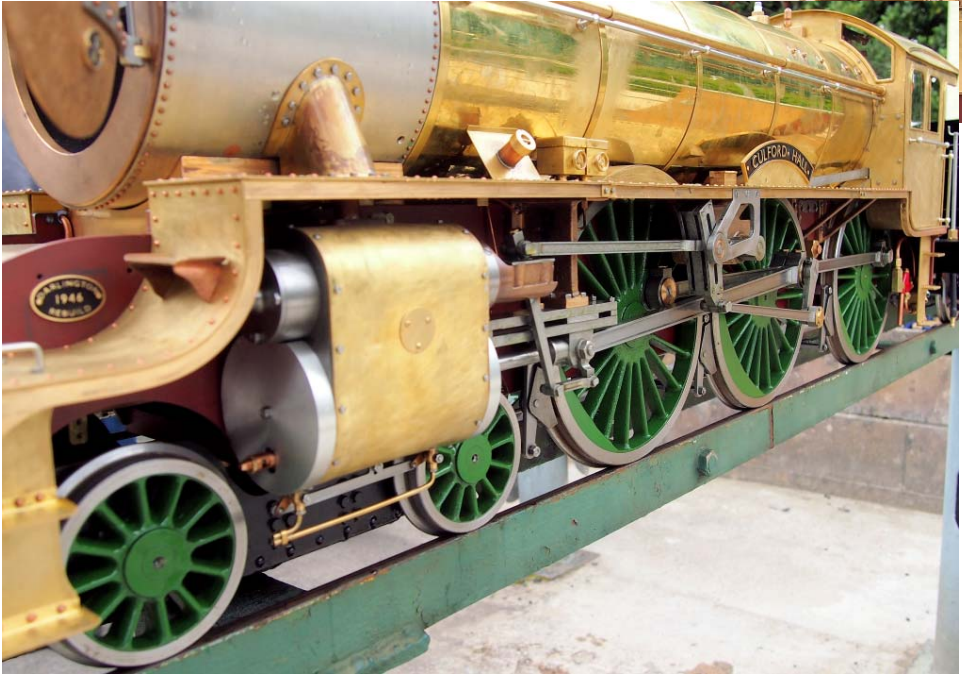
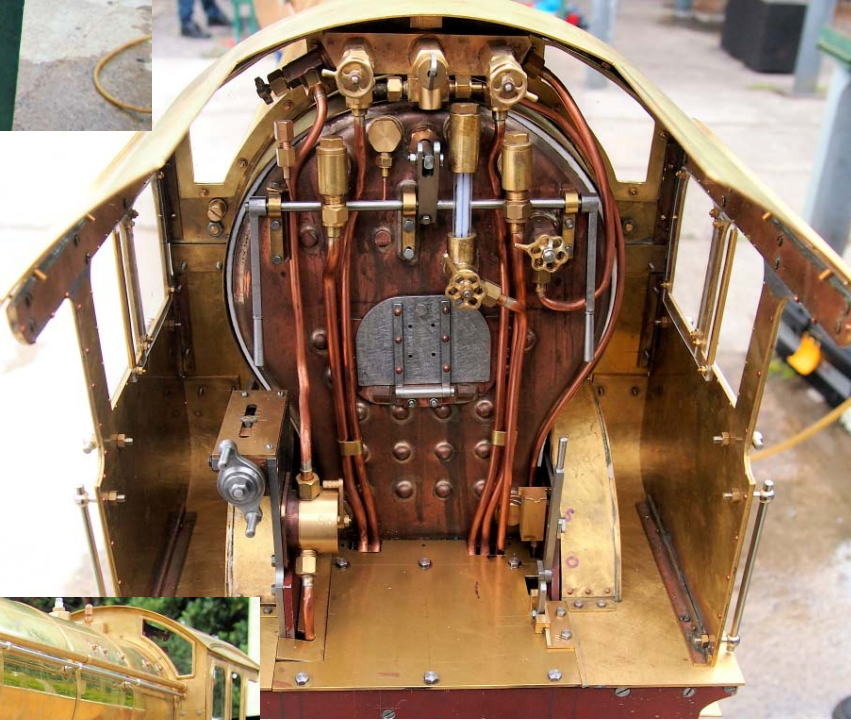
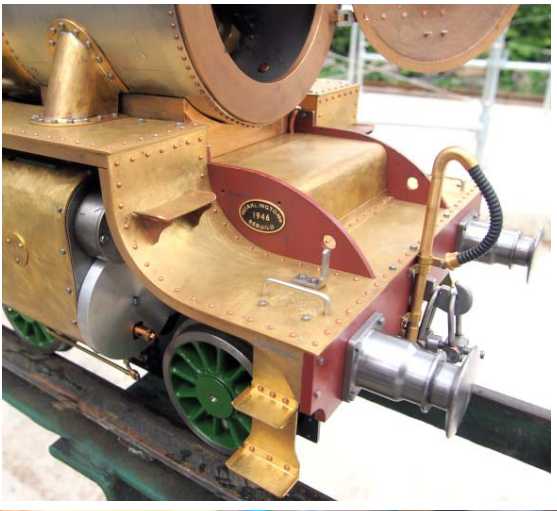
# CMES Newsletter

## Ken Stoa's new Locomotive a B2





# CMES Newsletter







# CMES Newsletter

A group of members took the Severn Valley Railway by storm, well it was the 40's weekend!





# CMES Newsletter

## Charity Open Day for the Footprints Foundation





# CMES Newsletter

## Around the Site



**New fencing beside the Tram Track**



**New mounting posts for The Signals**



**Little Tram in for more work**



**Modification to Raised Level Car to improve use with Steam Engines**



**Our Japanese Branch!!**



# CMES Newsletter

## August Open Day



## Bank Holiday Monday

